

CORPORATE EVENTS 2022

SAATCHI GALLERY



ABOUT

Since 1985, Saatchi Gallery has aimed to provide an innovative platform for contemporary art, presenting work by largely unseen young artists or by international artists whose work has been rarely or never exhibited in the UK.

In 2008, Saatchi Gallery moved to the iconic **70,000 square feet space** in the Duke of York's Headquarters in Chelsea, London. Since moving, the Gallery has welcomed **over 10 million visitors**, including **thousands** of school and community group tours and workshops each year. Saatchi Gallery has a digital audience of **over 6 million followers** on social media.

In 2019, Saatchi Gallery became a **registered charity** and begun a new chapter in its history. As a charity, the organisation seeks to be self-funded and reinvests all revenue into its core activities. By having your event at Saatchi Gallery, you are supporting our charitable mission to keep art and culture open and accessible to all.

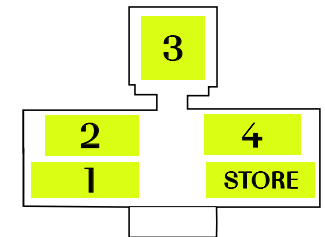
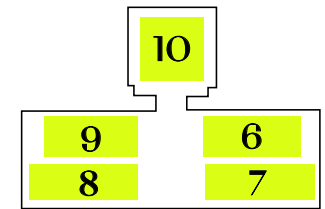
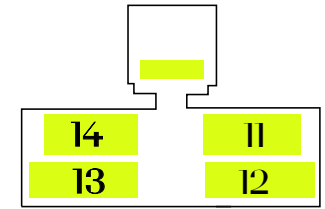


Installing the *Young British Artists I* exhibition

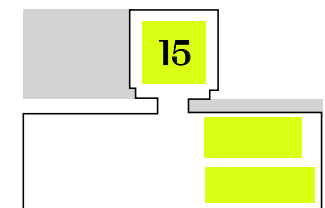
CONTENTS

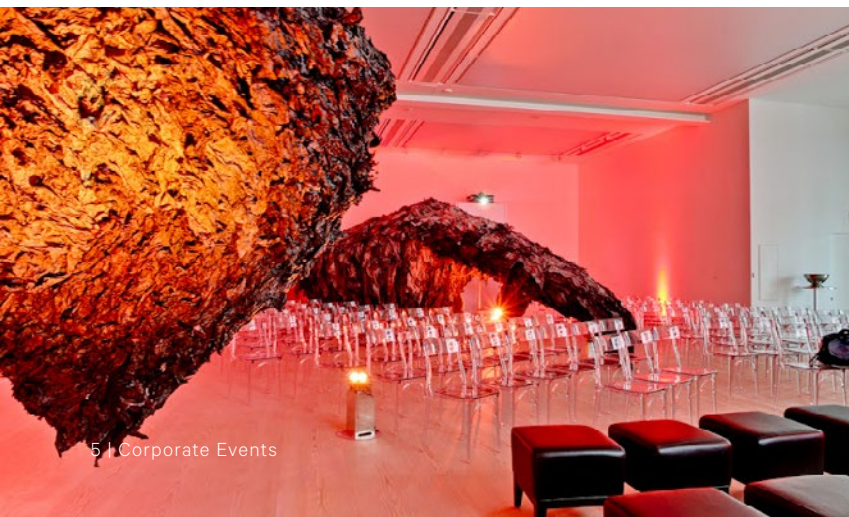
Floor Plans	7-10
Event Details	13
Past Clients	15
Rates	16

GALLERY OVERVIEW



Lower Ground Floor

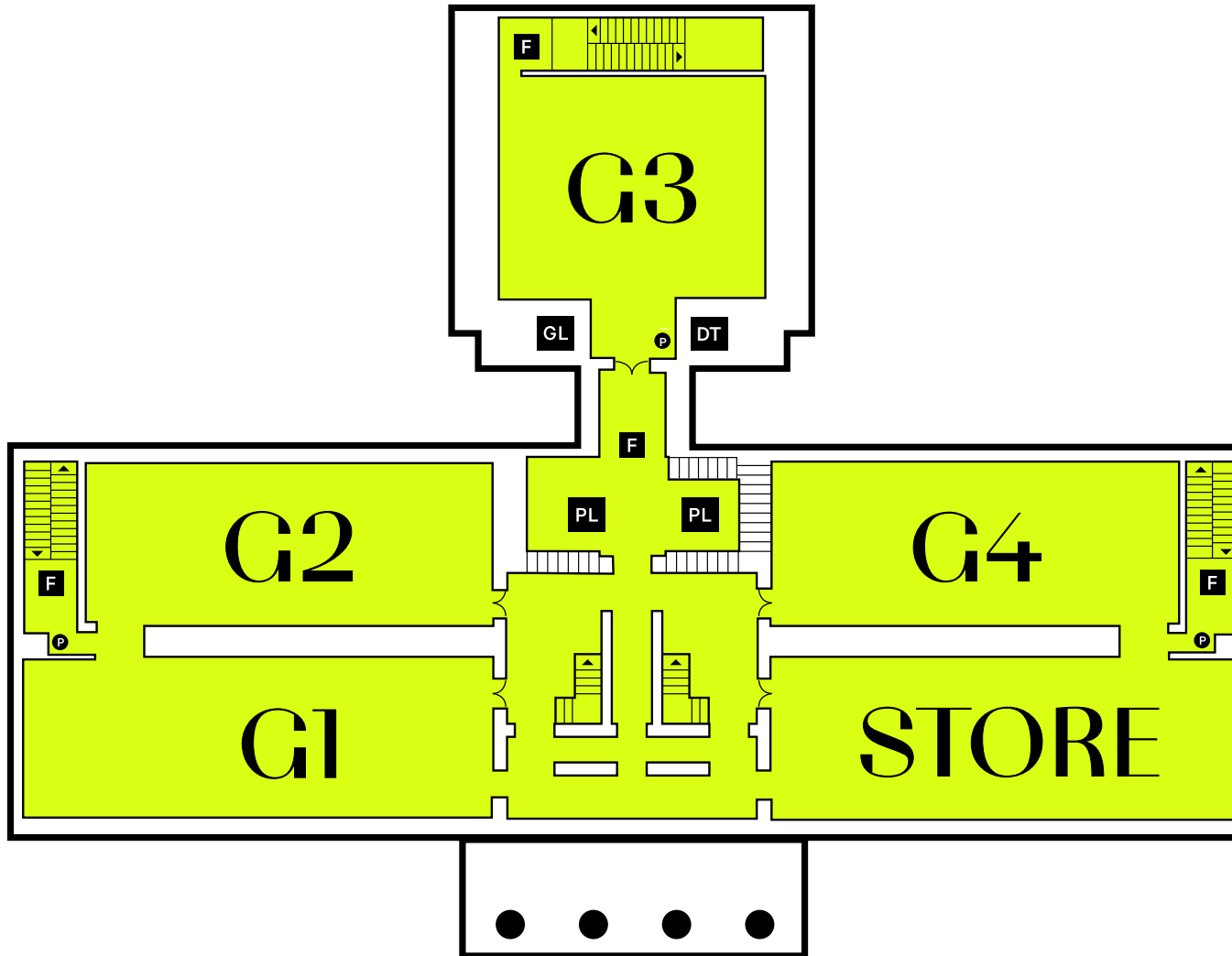




“A big thank you to all your team. It was a great event.”



GROUND FLOOR



Gallery 1	23.9 x 8.3 x 4.3 m
Reception	300
Seated dinner	200
Theatre	150

Gallery 2	21.0 x 8.3 x 4.3 m
Reception	300
Seated dinner	200
Theatre	150

Gallery 3	17.6 x 11.7 x 4.4 m
Reception	300
Seated dinner	200
Theatre	150

Gallery 4	21.0 x 8.3 x 4.3 m
Reception	300
Seated dinner	200
Theatre	150

Store	23.9 x 8.3 x 4.3 m
<i>Hire rates available upon request</i>	

DT Disabled toilet

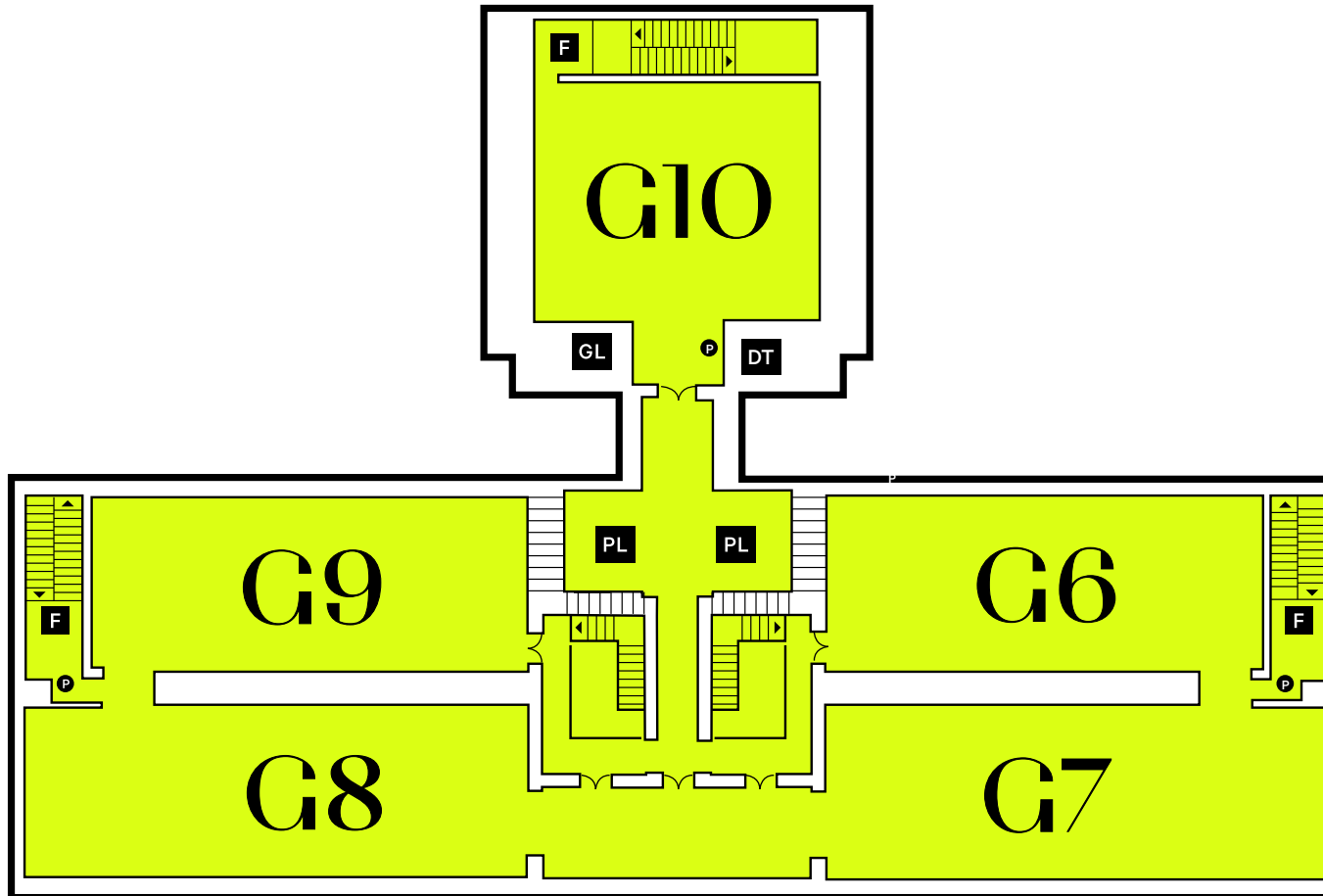
F Fire exit

PL Passenger lift

P Power supply
32 Amp 3 Phase

GL Goods lift
The maximum loading of the goods lift is 4200kg. The height of the door frame is 300cm (3m 7mm) (i.e. lowest point). The internal lift ceiling height is 390cm. The door way measures 190cm. The length of the lift when closed (at its minimum length) is 440cm and 500cm diagonal from corner to corner

FIRST FLOOR



Gallery 6	<i>21 x 8.3 x 4m</i>
Reception	300
Seated Dinner	200
Theatre	150

Gallery 7	<i>24 x 8.3 x 4m</i>
Reception	300
Seated dinner	200
Theatre	150

Gallery 8	<i>23.9 x 8.3 x 4m</i>
Reception	300
Seated dinner	200
Theatre	150

Gallery 9	<i>21 x 8.3 x 4m</i>
Reception	300
Seated Dinner	200
Theatre	150

Gallery 10	<i>13.8 x 11.7 x 7.2 m</i>
Reception	300
Seated dinner	200
Theatre	150

DT Disabled toilet

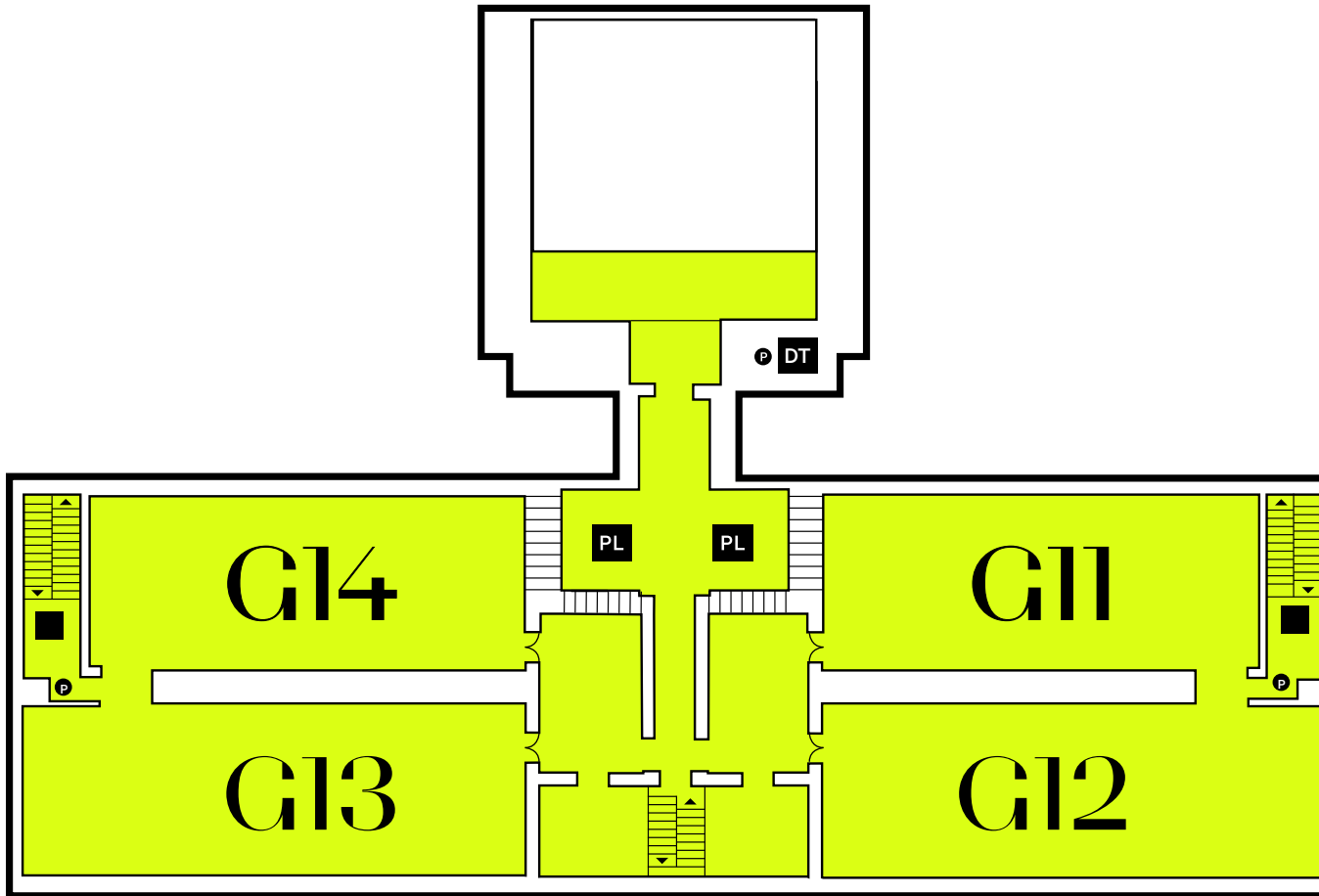
F Fire exit

PL Passenger lift

P Power supply
32 Amp 3 Phase

GL Goods lift
The maximum loading of the goods lift is 4200kg. The height of the door frame is 300cm (3m 7mm) (i.e. lowest point). The internal lift ceiling height is 390cm. The door way measures 190cm. The length of the lift when closed (at its minimum length) is 440cm and 500cm diagonal from corner to corner

SECOND FLOOR



Gallery 11	<i>21 x 8.3 x 3.2m</i>
Reception	300
Seated dinner	200
Theatre	150

Gallery 12	<i>24 x 8.3 x 3.2m</i>
Reception	300
Seated dinner	200
Theatre	150

Gallery 13	<i>24 x 8.3 x 3.2m</i>
Reception	300
Seated dinner	200
Theatre	150

Gallery 14	<i>21 x 8.3 x 4m</i>
Reception	300
Seated Dinner	200
Theatre	150

- DT** Disabled toilet

- F** Fire exit

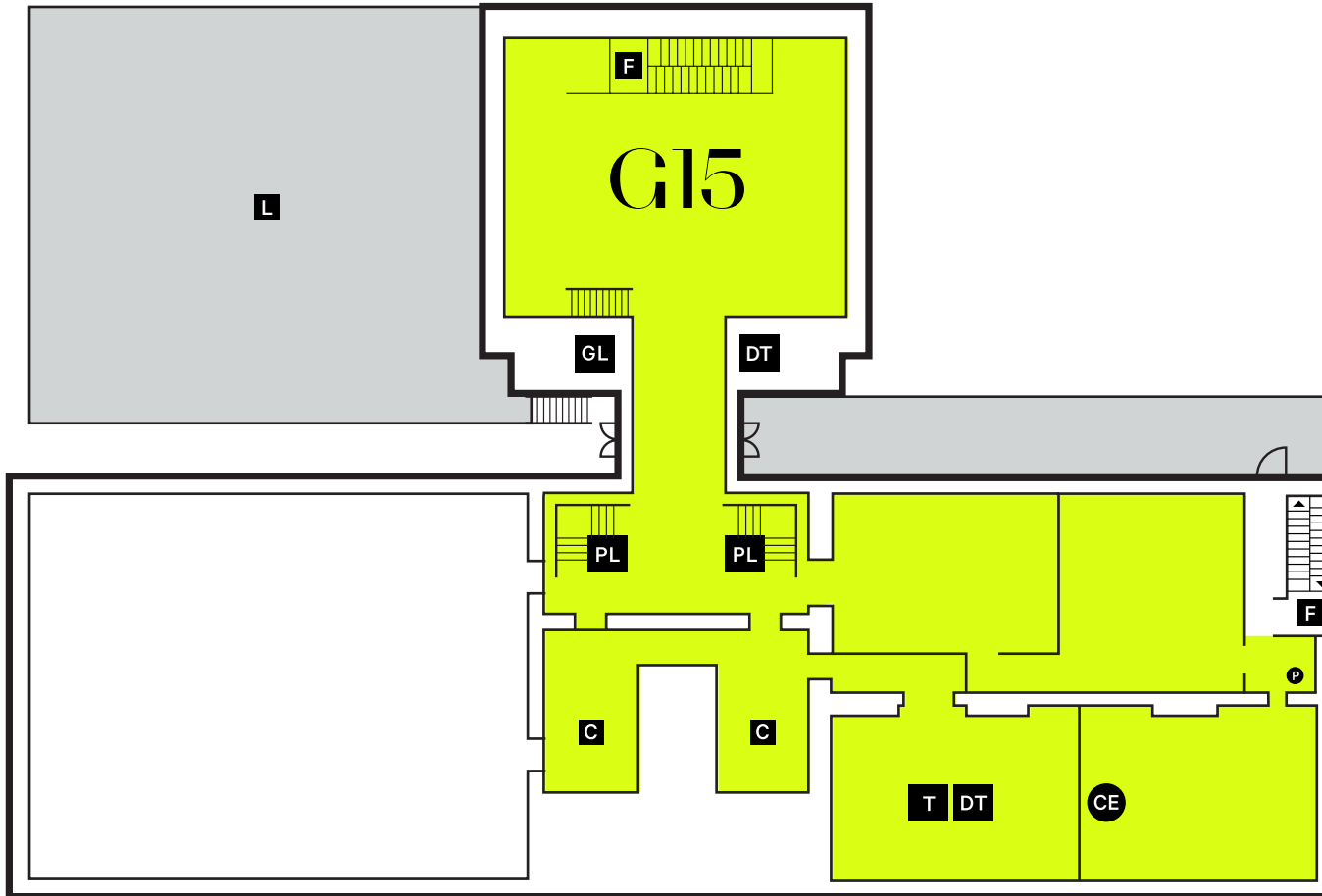
- PL** Passenger lift

- P** Power supply
32 Amp 3 Phase

LOWER GROUND FLOOR

GALLERY 15 16 x 11.5 x 3.9 m

Reception	220
Seated dinner	160
Theatre	150



T Toilets

DT Disabled toilet

CE Catering equipment

C Cloakroom

L Loading bay

The parking bay is located at the rear of the Gallery, which you can access turning right onto Turk's Row from Lower Sloane Street and then taking the first right onto Cavalry Square. Access time: Monday-Friday 9am-10pm, Saturday 8.30am-4pm, Sunday 11am-4pm.

PL Passenger lift

P Power supply
32 Amp 3 Phase

GL Goods lift

The maximum loading of the goods lift is 4200kg. The height of the door frame is 300cm (3m 7mm) (i.e. lowest point). The internal lift ceiling height is 390cm. The door way measures 190cm. The length of the lift when closed (at its minimum length) is 440cm and 500cm diagonal from corner to corner



“Thank you so much for such a successful event last night and for working with us so closely and tirelessly... Everything went so smoothly, and we were delighted with the venue.”



EVENT DETAILS

Saatchi Gallery is housed in an iconic, Grade II* listed building on the King's Road in Chelsea. Including a selection of 14 galleries spanning four floors, each space boasts:

- High ceilings
- Striking solid wooden floors
- Fully dimmable barrisol lighting, simulating natural daylight

Our Galleries offer well-proportioned, modern and minimalist spaces that provide an ideal blank canvas for production and an elegant setting for any event.

Our Events Team will offer dedicated support throughout the event planning process in order to smoothly coordinate all your needs and deliver remarkable events.



“Saatchi Gallery has proved to be the perfect venue for our events. It’s calm and understated with fantastic lighting, and the fact that we work alongside each new season’s exhibition brings a fresh new feel to each edition of the show.”



CLIENTS

Advertising Age • Advent International • **Allen & Overy** • Alstom Transport • Apax Partners
Aquascutum • Armand Basi • **ARUP** • Audi • Baillie Gifford • **Bain & Company** • **Barclays** • Bibendum • **Bicep**
BMW • **BNP Paribas** • BP Brand Communications Group • British Council • Bulgari • **Cabe Cable & Wireless**
Cadogan • Candover Insurance • **Cartier** • **CHANEL** • Channel Five • Citigate • ClearChannel Outdoor
Conde Nast • Craft Council • Curzon Group • Credit Suisse First Boston • Detica • **Deutsche Bank** Dinesen
Discovery Channel • **Facebook** • **FedEx** • First Protocol • **Fox Entertainment** • **Glenmorangie** • **Grey Goose** Group
Goedhuis & Company • Goldsmiths University of London • **Google** • **Gucci** • Hackett • Halifax • HBOS • **Hendricks**
Hiscox • H&M / Matthew Williamson • Hyundai • **Instagram** • **Institute of Cancer Research** • Ises Jackson Coles
Jaguar • **John Lewis** • **LG** • JP Morgan • **La Prairie** • **LG** • Living London • Lloyds • TSB • London Business
School • **London Film Festival** • LSC • Macfarlanes • Maitland Chambers • Marshall Wace • **Microsoft**
Mini • **Michael Kors** • Moving Venue • Nabarro • Nathanson • **Nike** • **Observer** • **Oxfam** • Phillips de Pury
& Company • PPA • Pringle of Scotland • PPS Group • PricewaterhouseCoopers • PruHealth • **Qliktech**
Quintessentially Permira • Reckitt Benckiser • **Samsung** • Singapore Airlines • SJ Berwin • **Standard Chartered**
Slaughter and May • Suntory • **Talk Talk** • Teenage Cancer Trust • The Central Office of Information • The Foreign
Office • **Time Out** • **The Sunday Times** • The Times Online • **UBS** • UCCA • **Unilever Universal** • **Veuve Clicquot**
Vodafone • **Vogue** • World of Interiors



RATES

	ONE GALLERY	TWO ADJOINING GALLERIES	ONE FLOOR	ENTIRE GALLERY
EVENING (6pm-10pm)	£9,000	£14,000	£20,000	£25,000
DAY - EVENING (9am-10pm)	£16,000	£22,000	Available on request	£44,000
1 DAY (9am-6pm)	£12,000	£16,000		£36,000
2 DAY (9am-6pm)	£22,000	£30,000		£70,000
3 DAY (9am-6pm)	£30,000	£42,000		£92,000
1 WEEK (9am-6pm)	£70,000	£100,000		£200,000

FURTHER INFORMATION

Event management fee:
£3,000
This fee covers the cost of gallery staffing and an end-to-end inhouse event manager.

This fee is mandatory to all event bookings.

Additional hours:
£1,000 per hour (subject to Gallery approval).

24 hour access
Can be arranged subject to Gallery approval

All prices quoted exclude VAT.



Discovery
NETWORKS

Discovery
NETWORKS

8

9

10

A Private
View

A Private
View

A Private
View

APPROVED SUPPLIERS

We ask that you work exclusively with these suppliers for your event.

EXTERNAL CATERERS

Alexander and Bjorck

Lucy Foden
parties@alexanderandbjorck.com
020 3457 1700
www.alexanderandbjorck.com

Bubble Food

Jay Collins-Down
jay@bubblefood.com
020 7703 2653
www.bubblefood.com

By Word of Mouth

Antonia Lyne
events@bywordofmouth.co.uk
020 8871 9566
www.bywordofmouth.co.uk

Caiger & Co

Alix Caiger
alix@caigerandcocatering.co.uk
020 8560 2059
www.caigerandcocatering.co.uk

Cellar Society

Tuuli Tornstrom
enquiries@cellarsociety.com
02084537141
www.cellarsociety.co.uk

Lush By Tom Kerridge

Holly Van Biene
hvanbiene@lushbytomkerridge.com
07703065983
www.lushbytomkerridge.com

Rocket Food

Charlie Grant Peterkin
Charlie@rocketfood.com
020 7622 2320
www.rocketfood.net

BAR ONLY SUPPLIER

Blackleaf

Michael Stringer
michael@blackleafevents.co.uk
01424 436 029
www.blackleafevents.co.uk

Mix & Muddle

Richard Maxted
richard@mixandmuddle.com
07815 601758
www.mixandmuddle.com

DRINKS

Pommery

Sara Hicks
shicks@vrankenpommery.co.uk
07803 854 719
www.pommery.com

Majestic

James Fenton
james.fenton@majestic.co.uk
020 7697 8000
www.majestic.co.uk

CLEANING

Nu Kleen Services Ltd

Scott Knowles
scott@nukleen.com
020 8594 0800
www.nukleen.com

SECURITY

Gallowglass

Nick Kostov
NickK@galsec.co.uk
084 5257 5648
www.gallowglasssecurity.com

Skylark Security

Jason Le
Jason@skylarksecurity.co.uk
077 1932 7947
www.skylarksecurity.co.uk

FVF Security

Fernando Pereira
fernando@fvfsecurity.com
+44 (0) 7863193667
www.fvfsecurity.com

Pro-Feel Security

Gangndo Nguinabe
gangndo@pro-feel.co.uk
0203 176 7684
www.pro-feel.co.uk

POWER

Gekko Production Services Ltd

Rab Fernandez
rab@gekko-ps.co.uk
07951 579730
www.gekko-ps.co.uk

GRAPHICS & VINYL

Eye For Detail

Leo
info@eyefordetailinstalls.com
07814 454482
www.eyefordetailinstalls.com

InkValley

Elke Hanspach
elke@inkvalley-london.com
07931 308 918
www.inkvalley-london.com

Contour Direct Ltd

James Avis
james@contourdigital.com
020 8575 8989
www.contourdigital.com

Ficklestix

Marko Knowles
marko@ficklestix.com
078 8580 6877
www.ficklestix.com

FLORISTS

The Urban Flower Firm

Adam Knights
tuff@theurbanflowerfirm.com
020 7252 3228
www.theurbanflowerfirm.com

Elizabeth Marsh Floral Design

Liz Marsh
liz@elizabethmarsh.co.uk
020 7738 8506
www.elizabethmarsh.co.uk

Lavender Green

Alice Groom
alice@lavendergreen.co.uk
020 7127 5303
www.lavendergreen.co.uk

Mary Jane Vaughan

Zoe Hickman
zoe@maryjanevaughan.co.uk
020 7385 8400
www.maryjanevaughan.co.uk

Rob Van Helden

Emma Farah
emma@rvhfloraldesign.com
020 7720 6774
www.rvhfloraldesign.com

Veevers Carter

Tabitha Allen
tabitha.allen@veeverscarter.com
020 7237 8800
www.veeverscarter.com

Wild About

Leanne Roberts-Hewitt
leanne@wildabout.co.uk
0203 794 7487
www.wildabout.co.uk

Endeavour Floral Design

Steven Clark
Endeavour-floraldesign@hotmail.com
07803 505 873

APPROVED SUPPLIERS

WIFI

Noba

Nick Taylor
nick@noba.co.uk
020 3440 4610
www.noba.co.uk

STAFFING & HOSTESSES

Captivate London

Sarah McGrath
info@captivatelondon.com
07718 883829
www.captivatelondon.com

The Event Exhibition Partnership

Liz Turner
liz.turner@theeventpartnership.co.uk
07966 232513
www.theeventpartnership.co.uk/

VIRTUAL EVENTS

Broadsword Group

Aleysha Eve
hello@wearebroadsword.com
020 8776 5386
wearebroadsword.com

PHOTOGRAPHER

Matt Chung Photography

Matt Chung
mattchungphoto@gmail.com
079 4027 8679
www.mattchungphoto.com

Lucy Emms Photography

Lucy Emms
lucy@lucyemms.com
07707 754119
www.LucyEmms.com

TRAFFIC MANAGEMENT

CTM

Brian Welti
brian.welti@ctm.uk.com
016 7654 9001
www.ctm.uk.com

SET BUILD

True Staging

Thomas Allen
tom@truestaging.co.uk
012 7765 8735
www.truestaging.co.uk

Diagon Ltd

Liam Ownsworth
liam@diagonltd.com
020 8311 2200
www.diagonltd.com

Set Square

Matthew Clemitson
matt@settsquarestaging.com
07710 505147
www.setsquarestaging.com

White Space Creative Solutions

Kurt Bowen
Kurt@wscreativesolutions.co.uk
012 0687 7450
www.wscreativesolutions.co.uk

ENTERTAINMENT

Contraband

Emily Davis
emily@contrabandevents.com
020 8829 1152
www.contrabandevents.com

Sternberg Clarke

Jane Moore
jane@sternbergclarke.co.uk
020 8877 1102
www.sternbergclarke.co.uk

Sauce DJs

Stuart Bevan
stuart@saucedjs.com
07792 559754
www.saucedjs.com

HEALTH & SAFETY

Hornersalus

Chris Horner
info@hornersalus.com
020 8954 6333
www.hornersalus.com

Gallowglass Health & Safety

Steve Kearney
stevekearney@gallowglass.com
078 3186 4457
www.gallowglasshs.co.uk

FURNITURE

Great Hire

Tanya Wazir
info@greathire.co.uk
020 8965 5005
www.greathire.co.uk

PRODUCTION AGENCIES

Event Concept

Dave Murray
dave.murray@eventconcept.co.uk
020 7740 3988
www.eventconcept.co.uk

PRG XL Video

Cameron Bannister
cbannister@prg.com
0207 632 1587
www.prg.com/uk

White Light

Alicia Earls
events@whitelight.ltd.uk
020 8254 4870
www.whitelight.ltd.uk

Fisher Productions Ltd

Kate Kelly
katek@fisherproductions.co.uk
020 8871 1978
www.fisherproductions.co.uk

Delta Live

Sarah Brundell
enquiries@deltalive.com
020 8339 300
www.deltalive.com

EXHIBITION PRODUCTION

Quintessentially Art

Nicole Kluk
nicole@quintessentiallyart.com
020 3073 6698
www.quintessentiallyart.com

RIGGING

Outback Rigging

Conrad Ryan / Jerome Rosling
conrad@outbackrigging.com
020 8993 0066
www.outbackrigging.com

SCREENS & WALLING

Aubury & Associates

Adrian Wesson
workshop@auburyandassociates.co.uk
020 8200 4448
www.auburys.com

Blackwall Hire

Julia Feeney
julia@blackwallhire.co.uk
079 6615 6942
www.blackwallhire.co.uk

Blackout Ltd.

Martin Wood
martinW@blackout.co.uk
020 8687 8400
www.blackout.co.uk



CONTACT

For further details, kindly contact our events team:
+44 (0) 20 7811 3095 | events@saatchigallery.com

SAATCHI GALLERY