

EVENTS AT SAATCHI GALLERY

DUKE OF YORK'S HQ, KING'S ROAD, LONDON, SW3 4RY

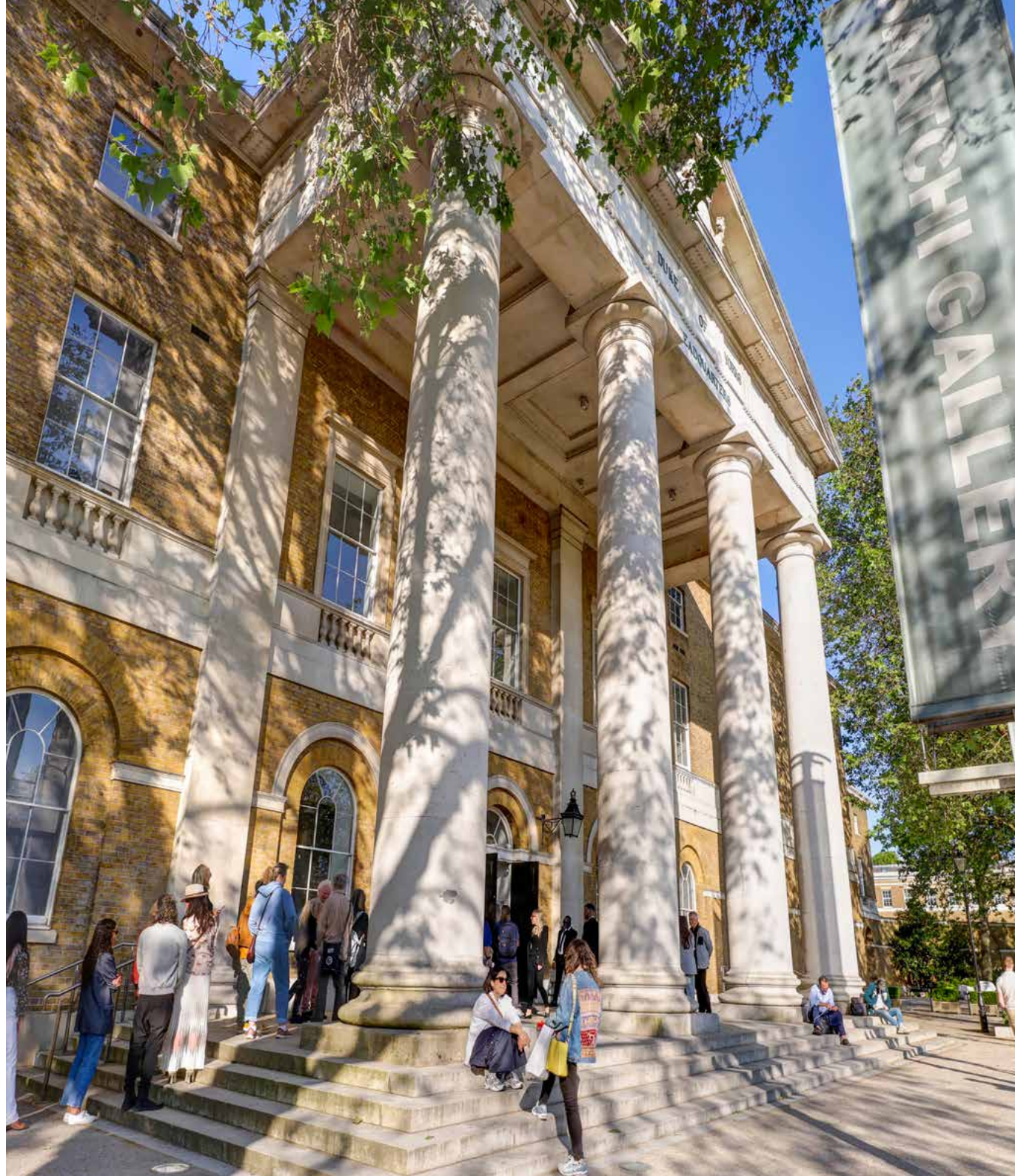
ABOUT

Saatchi Gallery exists as a registered charity to provide an innovative and accessible platform for contemporary art and culture. We proudly offer free entry to school, university & community groups, made possible by event hires & Gallery partnerships.

Situated on King's Road in Chelsea, our Grade II listed building boasts 13 spacious galleries, all providing the perfect canvas for your unique event. Our galleries are fully accessible, have three-phase power, wifi, dimmable barrisol lighting and high ceilings.

Available year-round, Saatchi Gallery offers blank canvas spaces, as well as the opportunity to host your event within one of our major exhibitions. From product launches, to dinners and evening receptions, the opportunities for events at Saatchi Gallery are endless.

By having your event at Saatchi Gallery, you are supporting our charitable mission to keep art and culture open and accessible to all.





*Immersive Brand Event
in Gallery 13*



*Weekend-long Brand Activation
in Gallery 3*



3 | Events at Saatchi Gallery

*Wine Tasting
in Gallery 7*



*Intimate Influencer Dinner & Product Reveal
in Gallery 12. © Moriarty Events.*



Branded & Floral Entrance Display



*Charity Auction & Dinner
in Gallery 13*



*Awards & Panel
in Gallery 3*



*Private dinner against the backdrop of
a major exhibition, in Gallery 6*



*Fashion display
in Gallery 10*

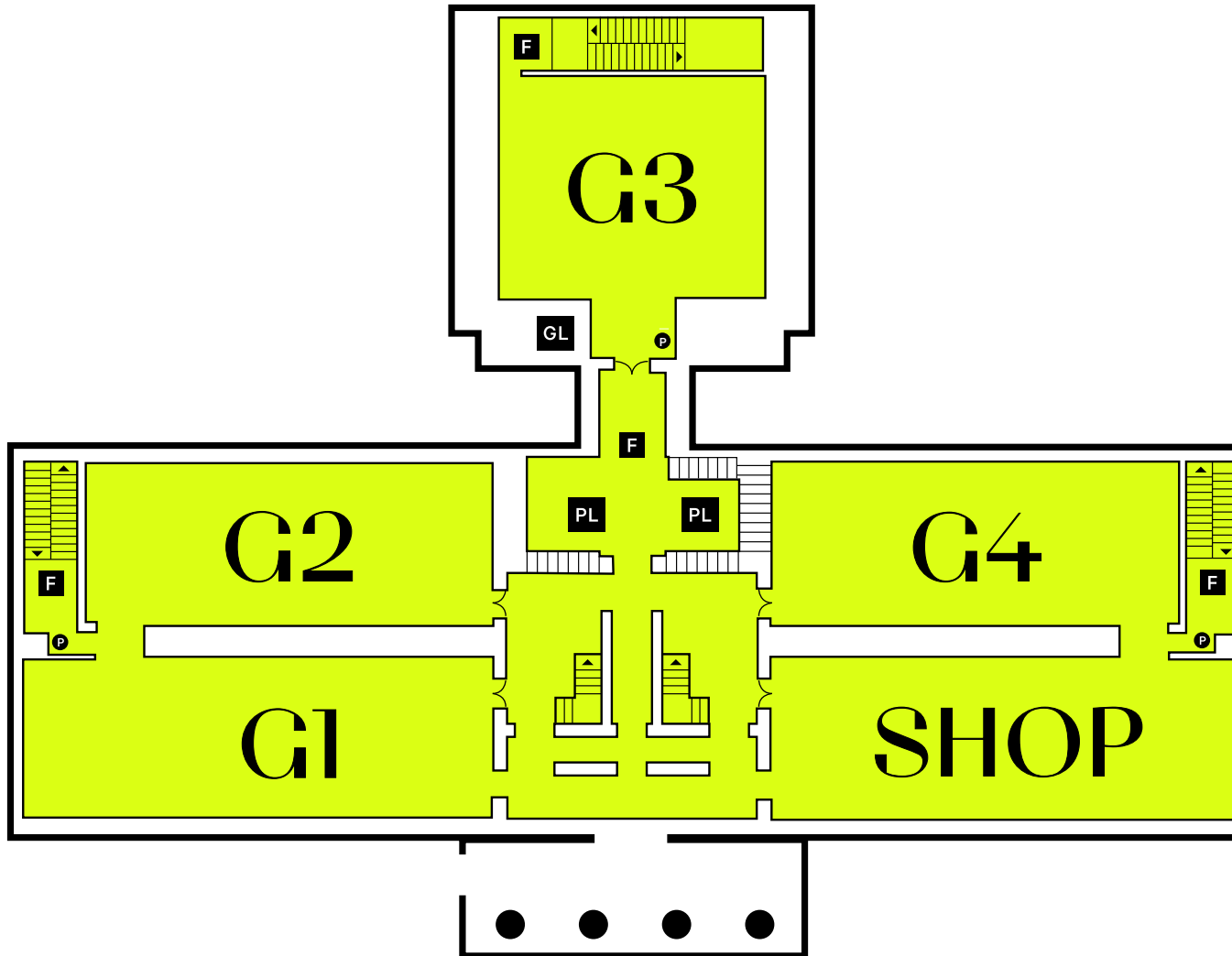


*Conference
in Gallery 2*



*Drinks Reception & Party
in Gallery 3*

GROUND FLOOR



Gallery 1	23.9 x 8.3 x 4.3 m
Reception	280
Seated dinner	160
Theatre	150

Gallery 2	21.0 x 8.3 x 4.3 m
Reception	250
Seated dinner	150
Theatre	150

Gallery 3	17.6 x 11.7 x 4.4 m
Reception	250
Seated dinner	170
Theatre	150

Gallery 4	21.0 x 8.3 x 4.3 m
Reception	250
Seated dinner	150
Theatre	150

Shop	23.9 x 8.3 x 4.3 m
Not available for hire	

Please note, all capacities are subject to blank canvas hire. and may be lower dependent on the exhibition in situ.

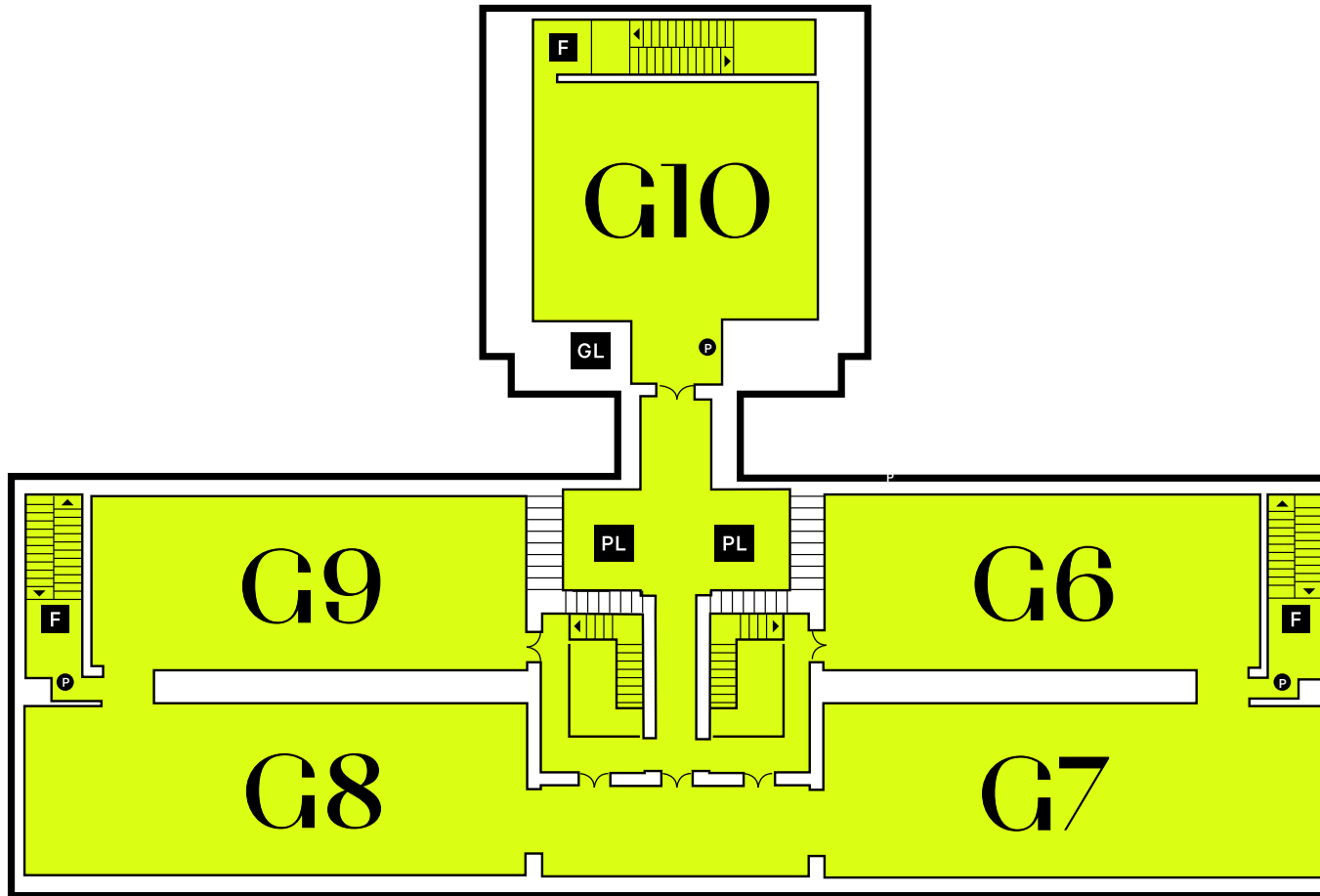
- F** Fire exit

- PL** Passenger lift

- P** Power supply
32 Amp 3 Phase

- GL** Goods lift
Dimensions available on request

FIRST FLOOR



Gallery 6	<i>21 x 8.3 x 4m</i>
Reception	250
Seated Dinner	150
Theatre	150

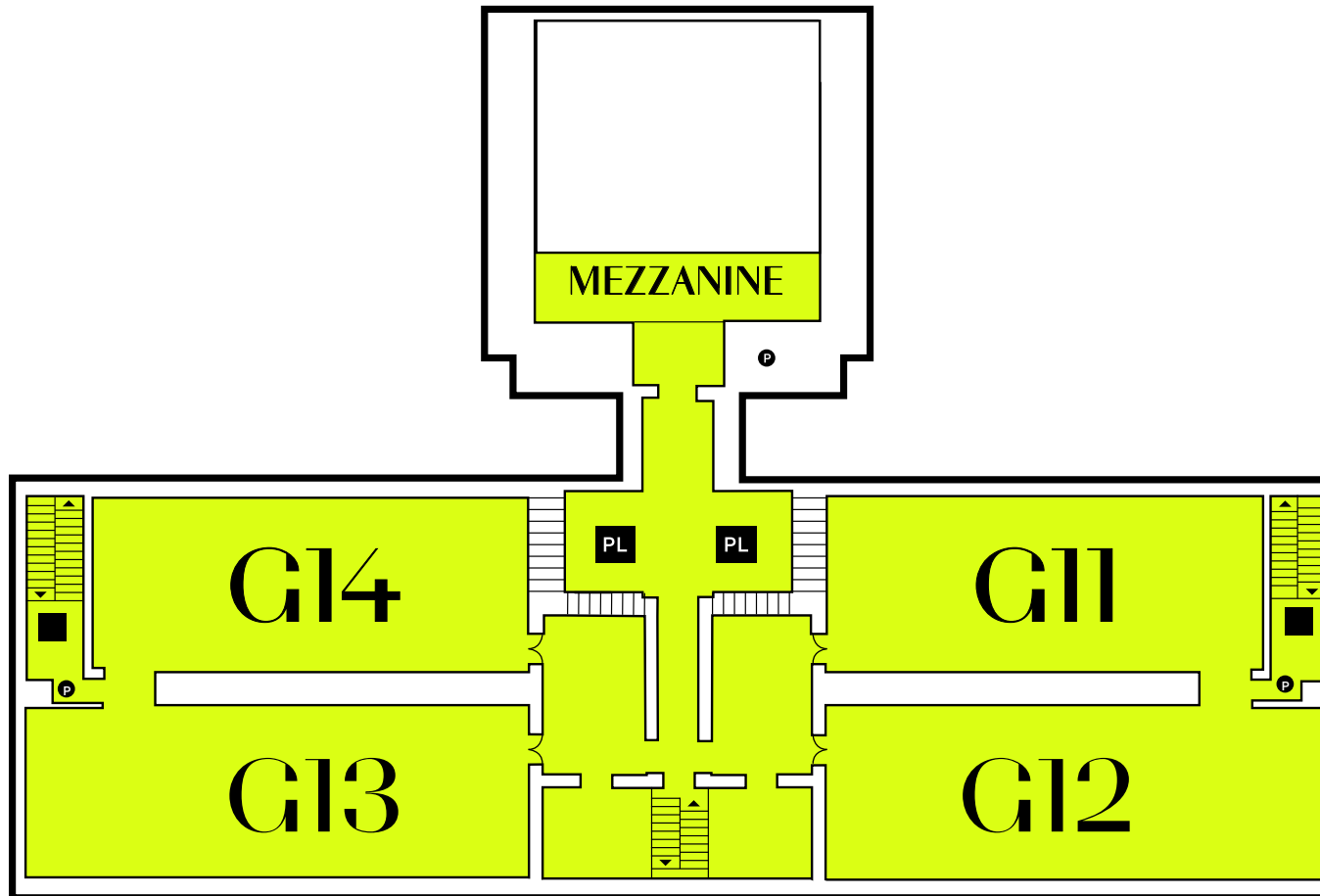
Gallery 7	<i>24 x 8.3 x 4m</i>
Reception	280
Seated dinner	160
Theatre	150

Gallery 8	<i>23.9 x 8.3 x 4m</i>
Reception	280
Seated dinner	160
Theatre	150

Gallery 9	<i>21 x 8.3 x 4m</i>
Reception	250
Seated Dinner	150
Theatre	150

Gallery 10	<i>13.8 x 11.7 x 7.2 m</i>
Reception	350
Seated dinner	180
Theatre	150

SECOND FLOOR



Gallery 11 *21 x 8.3 x 3.2m*

Reception	220
Seated dinner	130
Theatre	100

Gallery 12 *24 x 8.3 x 3.2m*

Reception	250
Seated dinner	140
Theatre	120

Gallery 13 *24 x 8.3 x 3.2m*

Reception	250
Seated dinner	140
Theatre	120

Gallery 14 *21 x 8.3 x 4m*

Reception	220
Seated Dinner	130
Theatre	100

APPROVED SUPPLIERS

We ask that you work exclusively with these suppliers for your event. All our suppliers are familiar with the venue and accredited to work at Saatchi Gallery.

CATERERS

Alexander and Bjorck

Annie Holden
parties@alexanderandbjorck.com
020 3457 1700
www.alexanderandbjorck.com

Bubble Food

Lucy Scarlett
lucy@bubblefood.com
020 7703 2653
www.bubblefood.com

By Word of Mouth

Chloe Goreham
events@bywordofmouth.co.uk
020 8871 9566
www.bywordofmouth.co.uk

Dinner Ladies

Lily Cai
lily@dinnerladiesltd.com
07837 358 921
www.dinnerladiesltd.com

Host Hospitality

Anastasia Sewell
anastasia@hosthospitality.co.uk
07543 821 718
www.hosthospitality.co.uk

Jimmy Garcia Catering

Jo Furber
jo.furber@jimmygarciacatering.com
020 7998 3676
www.jimmygarciacatering.com

Lettice Events

Steph Gale
events@letticeevents.com
020 7820 1161
www.letticeevents.com

Social Pantry

Kristy Robinson
kristy@socialpantry.co.uk
020 8871 1949
www.socialpantry.co.uk

DRINKS ONLY

Mix & Match

Paul Keighley
paul@mixandmatchltd.co.uk
07784 517 674
www.mixandmatchltd.co.uk

Mix & Muddle

Richard Maxted
richard@mixandmuddle.com
07815 601 758
www.mixandmuddle.com

AV

DCLX

Alex Girdwood
alex.girdwood@dclx.co.uk
07782 277 956
www.dclx.co.uk

Delta Live

Sarah Brundell
sarah.brundell@deltalive.com
020 8339 3800
www.deltalive.com

White Light

Joshua Wray
venues@whitelight.ltd.uk
020 8254 4800
www.whitelight.ltd.uk

PRODUCTION

Bespoke

Megan Bourne
megan@bespoke-london.co.uk
020 8961 1510
www.bespoke-london.co.uk

Event Concept

Kelly Brewer
kelly.brewer@eventconcept.co.uk
020 7064 3553
www.eventconcept.co.uk

Wise Productions

Abby Sammons
events@wiseproductions.co.uk
020 8991 6922
www.wiseproductions.co.uk

FLORISTS

Lavender Green

Rhiannon Peach
rhiannon@lavendergreen.co.uk
020 7127 5303
www.lavendergreen.co.uk

Lucy Vail

Autumn Withey-Stevens
autumn@lucyvailfloristry.co.uk
020 3325 4376
www.lucyvailfloristry.com

Mary Jane Vaughan Designs

Anna Donner
anna@maryjanevaughan.co.uk
020 7385 8400
www.maryjanevaughan.co.uk

Sage

Maria Agius
maria@sageflowers.co.uk
07464 591 576
www.sageflowers.co.uk

Sisters of Bloom

Clare Marie Jones
clare@claremariejones.com
07968 944 842
www.sistersofbloom.co.uk

Pinstripes & Peonies

Rachel de Woolfson
rachel@pinstripesandpeonies.com
020 7720 1245
www.pinstripesandpeonies.com

FURNITURE

Furniture on the Move

Adam Male
adam@furnitureonthemove.co.uk
0117 325 9695
www.furnitureonthemove.co.uk

Options Great Hire

Tabitha Allen
tabitha.allen@optionsgreathire.co.uk
020 3609 0609
www.options-greathire.co.uk

Hire It

Hannah Jackson
hannah@hireit-eventfurniture.com
020 3983 6773
www.hireit-eventfurniture.com

ENTERTAINMENT

Euphonica

Dan Savidge
hello@euphonica.com
020 3397 9018
www.euphonica.com

Prelude Entertainment

Rodney Prout
rodney@preludeentertainment.co.uk
020 8660 6647
www.preludeentertainment.co.uk

APPROVED SUPPLIERS

GRAPHICS & VINYL

Eye For Detail

Leo Rodriguez
info@eyefordetailinstalls.com
07814 454 482
www.eyefordetailinstalls.com

FicklestiX

Marko Knowles
marko@ficklestix.com
020 3375 4721
www.ficklestix.com

WALLING & DRAPING

Aubury & Associates (Walling)

Gideon Moss
gideon@auburys.com
07966 313 234
www.auburys.com

Blackout Ltd. (Drapping)

Chris Brain
chrisb@blackout.co.uk
020 8687 8400
www.blackout.co.uk

RIGGING

Outback Rigging

Stuart Cooper
stuart@outbackrigging.com
020 8993 0066
www.outbackrigging.com

CHAMPAGNE PARTNER

Champagne Telmont

Courtney Dinsdale
07823 350 952
www.champagne-telmont.com

SECURITY

Gallowglass

Nick Kostov
NickK@galsec.co.uk
07730 096 455
www.gallowglasssecurity.com

Skylark Security

Lorenzo Chame
bookings@skylarksecurity.co.uk
07719 327 947
www.skylarksecurity.co.uk

CLEANING

NuKleen

Matthew Davis
sales@nukleen.com
020 8594 0800
www.nukleen.com

POWER

Gekko

Rab Fernandez
rab@gekko-ps.co.uk
07951 579 730
www.gekko-ps.co.uk

FREQUENTLY ASKED QUESTIONS

What are the hire charges?

Hire of one Gallery for an evening starts at £8,000 +VAT. Please contact the events team for a bespoke quote based on your requirements.

How many Galleries can I hire?

We offer single Gallery, multiple Gallery, full floor (4 galleries) and entire Gallery hire, throughout the year.

What is included in my hire?

Hire includes exclusive use of your hired Galleries, as well as a dedicated Event Manager to offer support throughout the planning and execution of your event. Hire times include set up and dismantle periods.

Can I work with suppliers not on your approved supplier list?

Unfortunately not. Due to the nature of the venue, we ask that you work exclusively with the suppliers on our list.

What restrictions are there in the Gallery?

Surprisingly few! We ask that at the end of your hire period, you return the Gallery in its original condition.

Are there any additional fixed costs to be aware of?

As a dry hire venue, there are a few additional costs to consider as part of your hire. These include security and cleaning, both of which are mandatory.

Can I host my event within Saatchi Gallery's major exhibition?

Yes! From private tours to dinner and drinks receptions, there are many ways you can incorporate Saatchi Gallery's exhibitions into your event.

Can I hire the Gallery for a long period?

Subject to Gallery approval, the Gallery is available for exhibition hire, brand activations or large scale fairs. Please get in touch for further information.

CONTACT

For further details and information on rates, please email or call us on:

+44 (0) 20 7811 3089 | events@saatchigallery.com